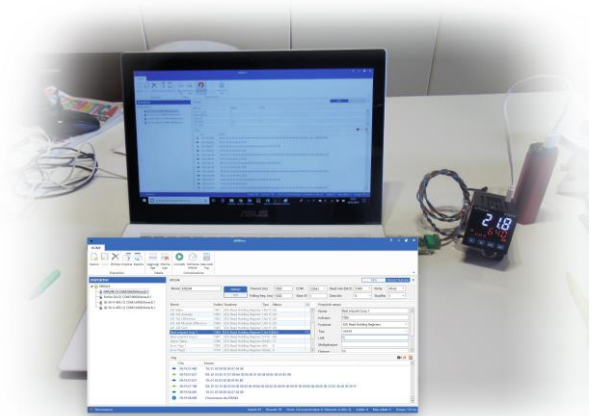


**aMBition** is an application software that performs functions of **master Modbus**. It has been mainly designed as a powerful tool for all developers and users of **slave Modbus** devices or for anyone who wants to become familiar with this protocol.

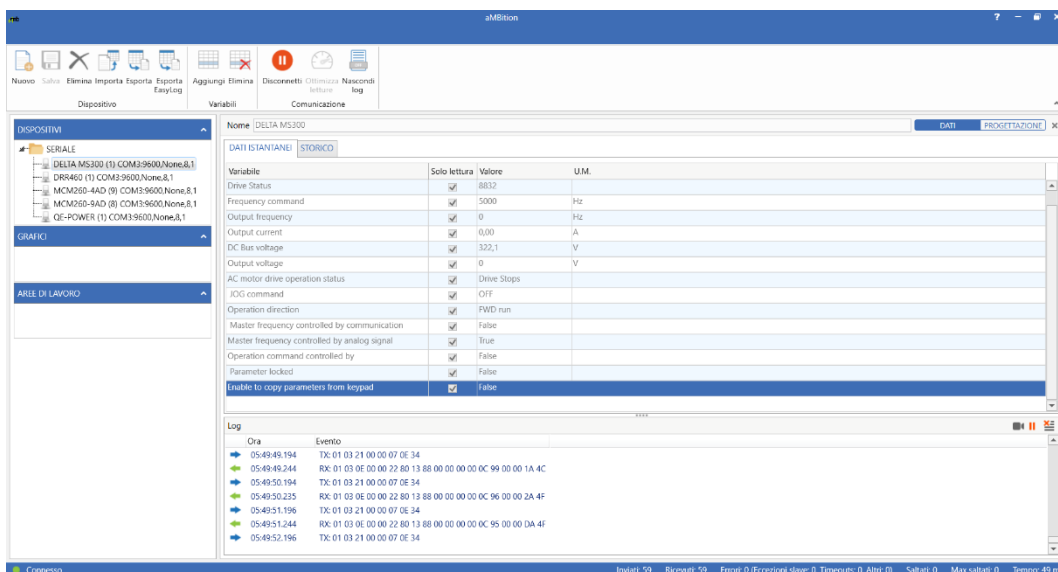
The main purpose of this software is to read variables from any slave Modbus device and to visualize them on the computer in readable form.

Once records have been configured, this utility allows you to connect with the slave device, **Modbus RTU** or **Modbus TCP**, read the selected records and visualize them in tabular or graphical format. Each configuration can be saved and reused for other projects which need a communication with the same device. In this way the configuration time is drastically reduced.

A special status window monitors communication in real time, displays every single byte in transmission and reception and reports errors in text format.



FREE LICENCE	PRO LICENCE
<ul style="list-style-type: none"> <li>• Reading data from ModBus RTU devices (serial devices) and TCP via Ethernet</li> </ul>	<ul style="list-style-type: none"> <li>• Data logging of each variable at the desired interval time into a local database</li> </ul>
<ul style="list-style-type: none"> <li>• Configuration of records to read</li> </ul>	<ul style="list-style-type: none"> <li>• Variables writing</li> </ul>
<ul style="list-style-type: none"> <li>• Configuration of variables (data type, ModBus parameter)</li> </ul>	<ul style="list-style-type: none"> <li>• Chart management</li> </ul>
<ul style="list-style-type: none"> <li>• Display of data in a table format</li> </ul>	<ul style="list-style-type: none"> <li>• Storing files to DB</li> </ul>
<ul style="list-style-type: none"> <li>• Possibility of converting the raw data into an engineered value</li> </ul>	<ul style="list-style-type: none"> <li>• Work areas management</li> </ul>
<ul style="list-style-type: none"> <li>• Support of char, int, long, float and bits type variables</li> </ul>	
<ul style="list-style-type: none"> <li>• Storing device configuration into JSON files</li> </ul>	
<ul style="list-style-type: none"> <li>• Importing a JSON file of a previous configuration</li> </ul>	
<ul style="list-style-type: none"> <li>• Reading optimization</li> </ul>	
<ul style="list-style-type: none"> <li>• Display and log on file of transmission and reception data packets</li> </ul>	



Example of aMBition screen connected to an inverter